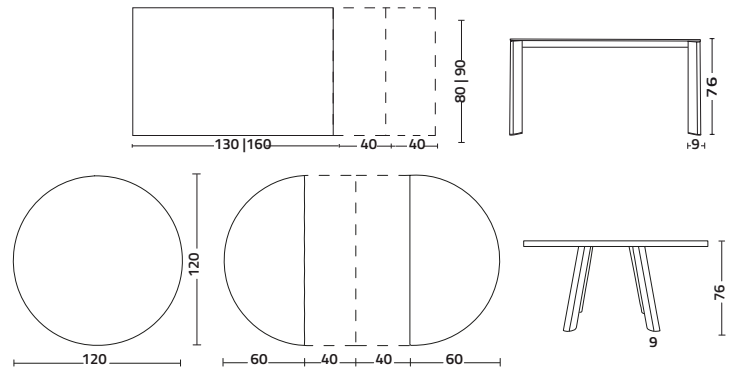


Level

Design CR&S Colico

Tavolo allungabile con telaio e struttura in alluminio verniciato ad apertura telescopica, con allunghe in laminato; il piano viene realizzato in laminato, cristallo o gres porcellanato ed è disponibile in varie misure, finiture e colori.

Extendable table with painted aluminium frame and framework, telescopic mechanism, and laminate extensions; its top is made of laminate, glass or porcelain stoneware and is available in different sizes, finishes and colours.






struttura - frame
alluminio - aluminium



piano - top
gres porcellanato - porcelain stoneware
pietra - stone



piano - top
laminato - laminate

allunghe - extensions
laminato - laminate

-  9003 bianco zucchero
sugar white
-  7024 grigio antracite
charcoal grey
-  9005 nero assoluto
absolute black

-  7004 grigio cemento
cement grey
-  7024 grigio antracite
charcoal grey
-  9005 nero assoluto
absolute black

-  3192 grigio cemento materico
cement grey
-  3349 grigio antracite materico
charcoal grey

-  3192 grigio cemento materico
cement grey
-  3349 grigio antracite materico
charcoal grey